

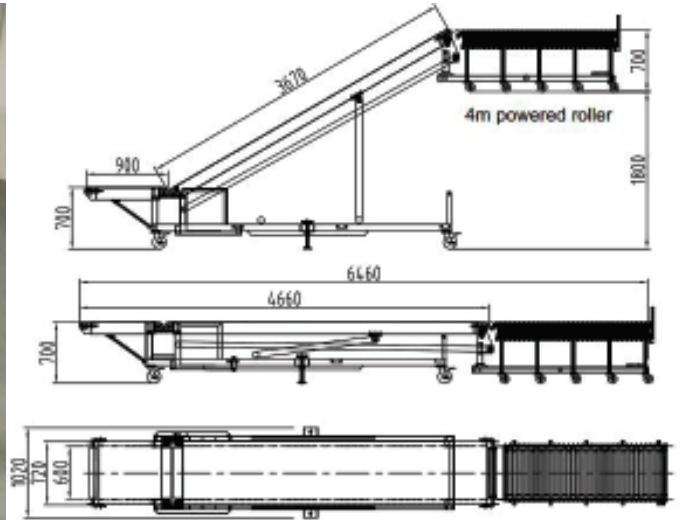
Automatic Truck Loading and Unloading Conveyor



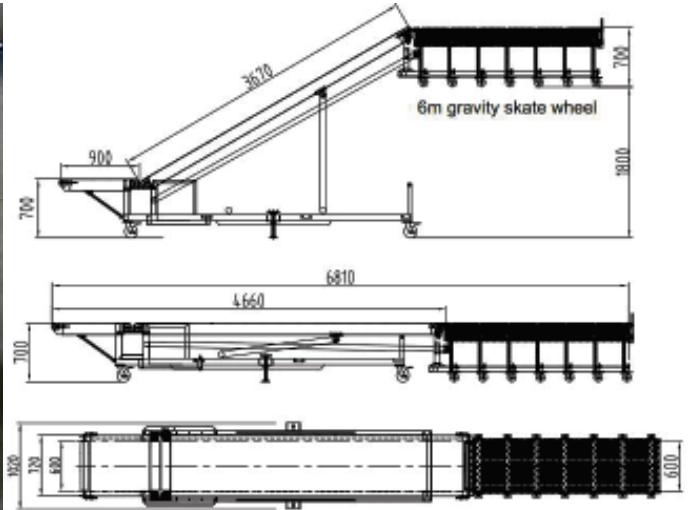
Automatic truck loading/Unloading conveyor is one of the most popular loaders, which largely facilitates material handling work and increases work efficiency. It is extremely flexible and easily movable in to the position with braked swivel castors.



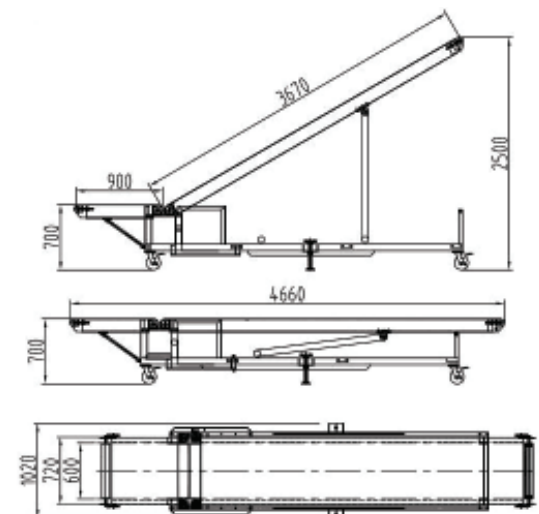
TLC-P600 with 4m expandable powered rollers



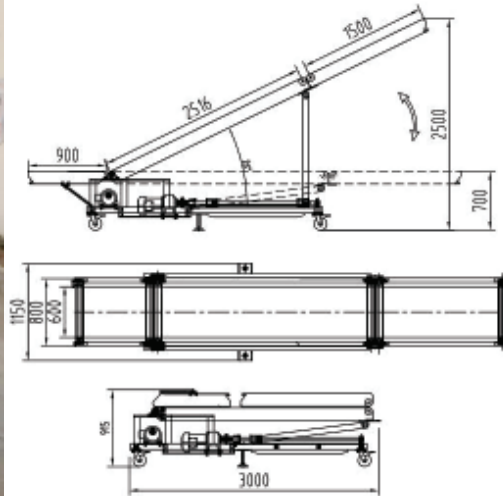
TLC-G600 with 6m gravity skate wheels



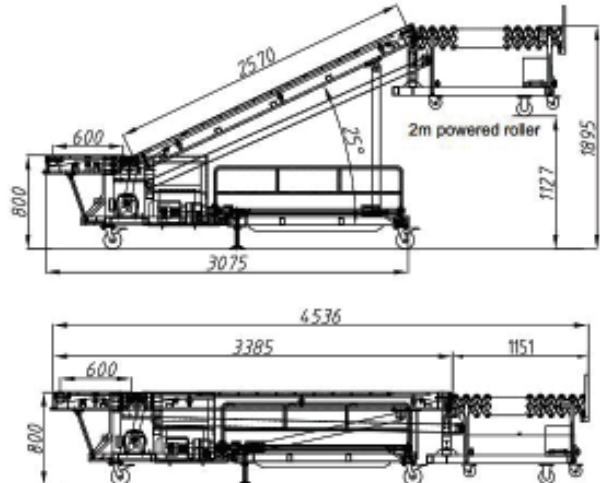
TLC-600 without front tongue



TLC-F600 is foldable



TLC-S600 a small version of TLC-P600



TECHNICAL SPECIFICATIONS

Model	Front Tongue	Belt Width	Lift Height	Variable Speed	Max. Load	Belt Motor	Lift Motor	Power Supply
TLC-P600	4m powered	600mm	700-2500mm	10-20m/min	50kg/m	1.5kw	2.2kw	380/220/110V
TLC-G600	6m gravity	600mm	700-2500mm	10-20m/min	50kg/m	1.5kw	2.2kw	380/220/110V
TLC-600	no	600mm	700-2500mm	10-20m/min	50kg/m	1.5kw	2.2kw	380/220/110V
TLC-F600	no	600mm	700-2500mm	10-20m/min	50kg/m	1.5kw	2.2kw	380/220/110V
TLC-S600	2m powered	600mm	800-1900mm	10-20m/min	50kg/m	1.5kw	2.2kw	380/220/110V

Technical Parameter

Adopt 600mm width 5mm thickness high grip green PVC belt.

Conveyor height adjustable from 700mm to 2500mm
Belt speed variable from 10 to 20 m/min.

Frame construction manufactured from 3mm thickness steel plate.

Easy to move around, with 150mm dia heavy duty swivel castors.

Automatically stop by limit switch when lifting up & down

Independent electricals includes ON/OFF, emergency stop, fwd/Rev. up/down, stop speed button.

CPG motors, DELTA frequency transfer, SCHNEIDER/Siemens electrical elements.

Power supply options 220V single phase, 50Hz or 380V 3phase also available.

Easy to connect to other flexible conveyors, belt conveyors and roller conveyors.